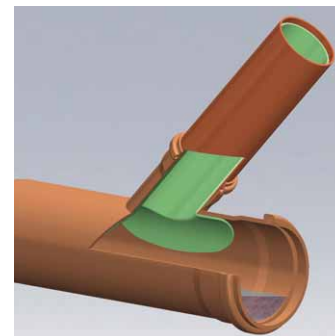
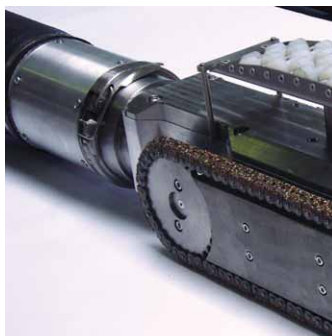


HSR-UV

Top-hat rehabilitation robot



Anlagenbau & Fördertechnik GmbH



Top-hat lateral pipe and junction rehabilitation, for installation depths of up to 60 cm, UV light curing

- UV light curing for rapid rehabilitation
- Follows bends up to an installation depth of 60 cm
- Ready-to-use top-hat sections for high quality
- Modular design for flexible use
- Main sewer pipe with liner from pipe size DN 200
- User-friendly operation and process visualization
- Acceptance log with image and process data



Description:

The HSR-UV is a self-propelled, remote-controlled rehabilitation robot for repairing lateral pipes and junctions using top-hat sections of resin material that are cured with UV-light.

The resin-impregnated top-hat section is made of highly flexible fabric material and enables rehabilitation of bent pipes up to an installation depth of 60 cm. The rehabilitation robot is initially pre-positioned using a high-grade color pan camera. The exact point of repair is then determined by two additional positioning cameras. All robot activities are initiated and controlled by the operator at the central operating console. Digital process visualization, together with the images of the four integrated cameras, enables continuous process tracking and permanent status monitoring.

Access to the point of repair from one manhole only is sufficient to ensure the supply of air, electricity and image data for the rehabilitation system along the rugged hybrid line with a max. length of 120 m.

Various chassis configurations are possible for variable and flexible use of the unit in main sewer pipes from DN 200.

When the rehabilitation process is completed, the job protocol, including the rehabilitation parameters and the relevant inspection video, is created and saved.

Technical data:

Length	approx. 2.100 mm depending on configuration
Diameter	min. 160 mm
Weight	approx. 70 kg
Electrical power connection	230 VAC, 4 kW
Compressed air supply	300 ltr./min, 6 bar

Options/expansions:

- Expansion options for up to DN 400 and for up to DN 600
- Expansion options for greater installation depths of up to 100 cm
- Variable chassis configurations and clamping units for specific needs
- Modular rehabilitation units
- Ready-to-use repair material
- Customized repair and service vehicles