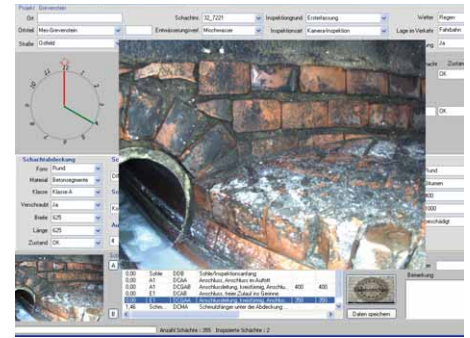


SI 4000

Manhole Inspection System



Inspection system for manholes with depths of up to 8 m, acquisition of inspection data according to EN 13508-2

- Standard-compliant, fully-automated manhole inspection
- Consistent high quality thanks to reproducibility
- Comprehensive data acquisition allows follow-up evaluation in the office
- Allows manhole inspection independent of the service vehicle
- Effective staff utilization thanks to one-person operation
- Data exchange via standard interface or with Digma manhole data acquisition system

Description:

The manhole inspection system SI 4000 is designed for full-surface data acquisition within the framework of manhole inspection in compliance with EN 13508-2. The system, which fits in a car trunk, is designed for one-person operation. The strict separation of inspection vehicle and camera telescope results in a flexible and mobile concept solution. The system is especially suited for inspecting those manholes that cannot be easily or directly reached by the inspection vehicle. The lockable spherical head supports quick, straightforward and precise alignment of the camera in the manhole.

Manhole inspection with the SI 4000 is divided into three process phases. In the first phase, the manhole cover and the dirt trap are documented with pictures taken manually. Then a series of pictures is taken as the camera is lowered from the manhole cover to the bottom of the manhole; this provides an initial survey of the manhole condition. In the third phase the detailed condition of the manhole is documented by means of six pictures taken horizontally at each of a succession of levels spaced 0.25 m apart. Additional individual pictures can be taken as required.

The control unit of the camera telescope and the Digma manhole data acquisition system form a functional unit. These software packages are installed on the inspector's laptop PC used in the inspection vehicle. The picture data collected at the manhole is transferred automatically into the database of the Digma manhole data acquisition system, which ensures standard data exchange with typical GIS systems.



Technical data:

Working depth	4000 mm
Transport length	1950 mm
Weight	39 kg
Electrical connection	12 VDC
Camera image resolution	1.2 mega pixels
Picture scan pattern	6 pictures per level, level spacing 0.25 m

Options/expansions:

- Various working depths: 4 m, 6 m, 8 m
- Battery mode for mobile operation
- Vehicle installation or complete delivery including vehicle
- Protection against external light sources