



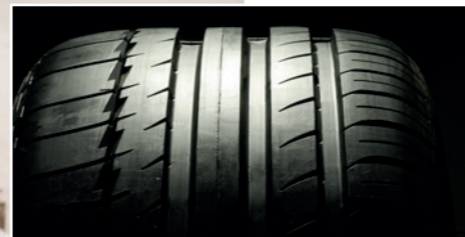
Anlagenbau & Fördertechnik GmbH



 **Rubber mixing room**



Your partner for innovative plant construction, conveyor technology and automation



About us

➔ Ulrich Rotte GmbH

Founded in 1994, our extensive product portfolio now offers our customers a range of attractive benefits.

Fully automated production facilities and special developments in the field of robotics are the fundamental strengths of our company. Come and meet our team of dedicated developers and design engineers, who have a passion for design and creativity. We focus on the following areas:

- Automotive industry
- Solar industry
- Wood technology
- Rubber processing industry
- Sewage technology
- Technical laminates

Thanks to our team of highly motivated and qualified technical professionals, we are able to offer our customers worldwide support and service – dedicated, unbiased, fast and flexible. We also provide on-site training courses, enabling your staff to learn new skills and make the most of your new plant.

We are also your specialist partner for special plant construction.

Learn more about our skills and expertise on the following pages.

Yours sincerely,

Ulrich Rotte



... for your business

➔ The rubber processing industry

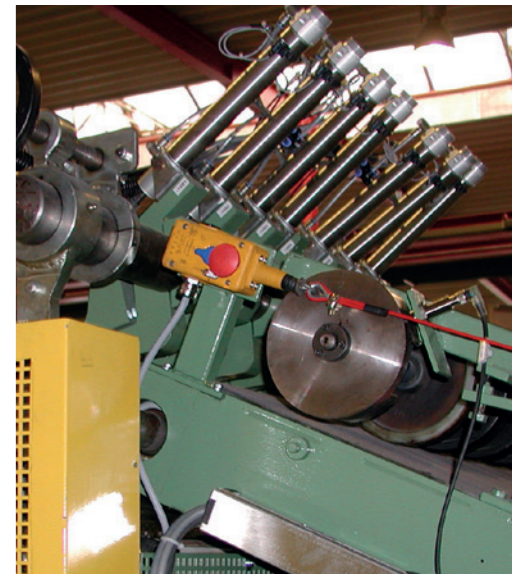
Ulrich Rotte GmbH offers a full range of mixing solutions for the production of rubber mixtures. From the preparation of raw materials to stacked pallets.

Besides standard solutions, we develop special ones tailored specifically to your needs. Our highly motivated and qualified team realizes your ideas and designs, effectively and individually.

Thanks to our core competencies in the field of special plant construction, you benefit from our extensive know-how and experience during every phase of your project. Everything from a single source: from planning and development to mechanical and electrical production at our premises, programming, installation, commissioning and worldwide service.

Ulrich Rotte GmbH is at home in the world. Our global customers underline our core competencies and international performance.

Challenge us with your brief!





From weighing ... ➔ Mixer line

Our mixer portfolio includes the following areas:

- Weighing and feeding materials
- Marking and labelling
- Sampling
- Coating
- Cooling
- Cutting
- Stacking
- Transporting

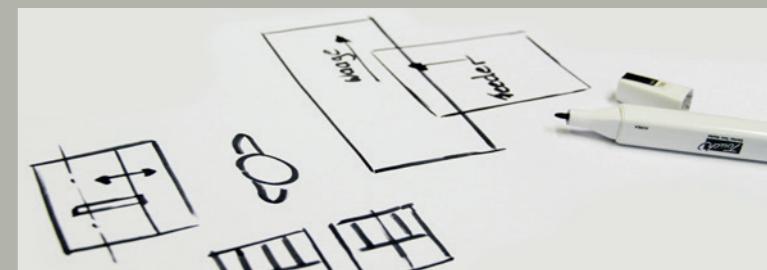
Our tailor-made mixer feeding includes weighing and feeding conveyors for polymer and minor chemical components. All the dimensions and conveyor speeds are individually adapted to your needs. Various additional options, such as pneumatic lateral guides or pneumatically actuated height adjustment, are just a few of our versatile capabilities.

Bale cutters and cutting units for rubber sheets enhance our product range for mixer feeding. Maybe you have some completely new feeding concepts in mind: Perhaps you wish to concentrate all the work areas on a single level and require the necessary lifting technology for mixer feeding, e.g. a conveyor belt or bucket elevator. We look forward to developing a special concept with you. Contact us for more information.



We realize your vision.

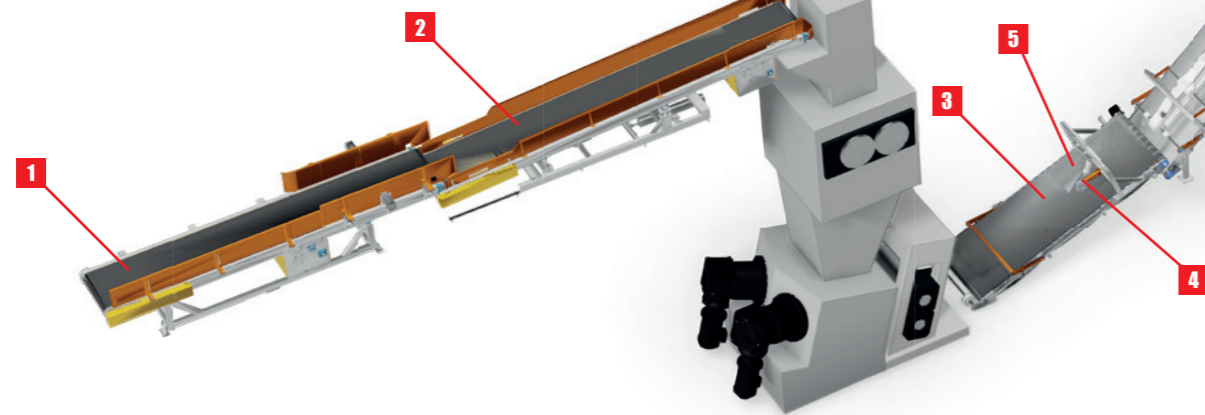
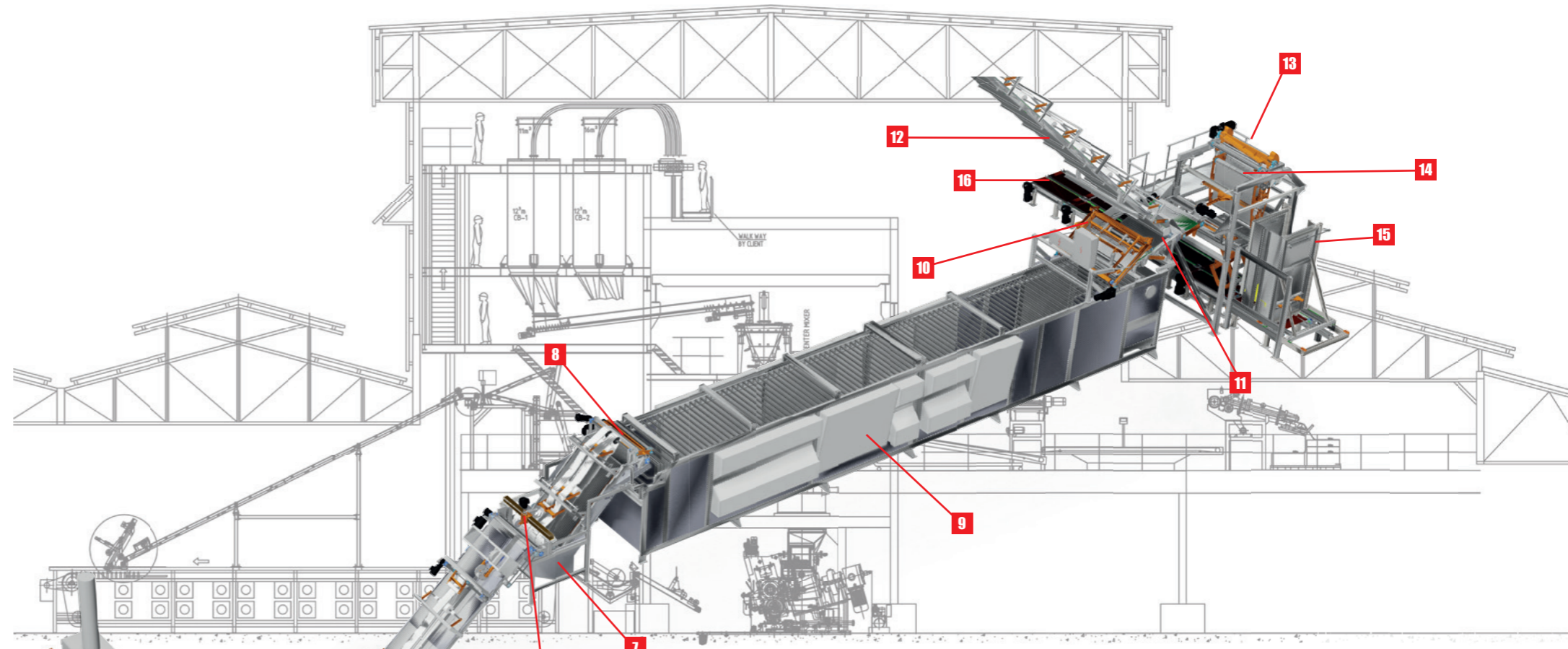
We develop the perfect
concept together with you.



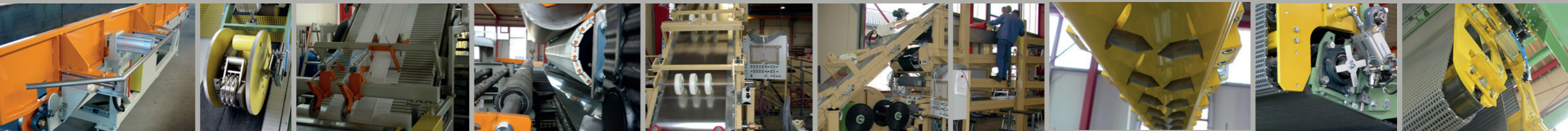
... to stacking ➔ Mixer line

No matter which mixing and discharge concept you employ, our downstream equipment, such as discharge conveyors, dip tanks and cooling sections, ensure the most efficient solutions to your structural and mechanical engineering situation and needs.

From the classic batch off and cantilever batch off line through various strip coolers to level coolers - our cooling units incorporate the entire machine range for the efficient and safe cooling of your mixing sheets. Further options, such as a marking device, a sampling device, a strip cutting unit, working platforms and respective steps, are quality additions to our extensive service portfolio.



- | | | |
|---------------------------------|---|---------------------------|
| 1 Polymer scale | 7 Dip tank | 13 Cross cutter |
| 2 Feeding conveyor | 8 Fan | 14 Pendulum |
| 3 Discharge conveyor | 9 Cooling tunnel | 15 Pallet magazine |
| 4 Marking device | 10 Gripper | 16 Pallet conveyor |
| 5 Sampling (heated area) | 11 Discharge conveyor | |
| 6 Strip cutting unit | 12 Discharge conveyor to mixer level | |

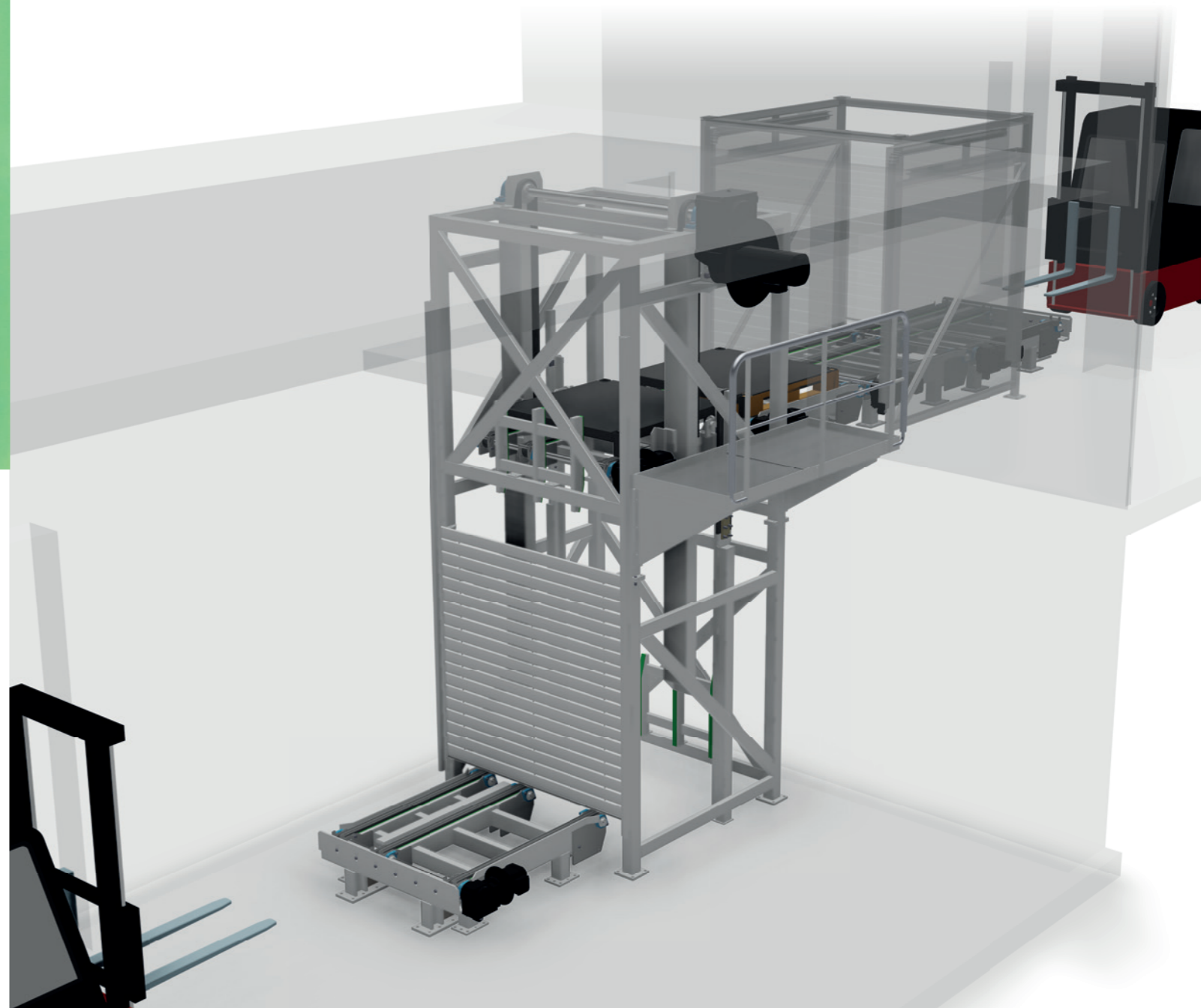




... to the warehouse ➤ Pallet conveyor systems

The integration of cutting-edge pallet transport systems and pallet magazine ensures time efficiency and fully automatic operation for various types of pallets, for example with a variably adjustable pallet magazine.

We tailor our services to your specific needs. Our solutions ensure the safe and reliable transportation of both full and empty pallets. Our transport concepts are the link between your production environment and your warehouse facilities. And if you wish to lift pallets between different elevation levels, our pallet elevator is the ideal solution.



From the cooling unit ... ➤ Stacker

A fully automated gripper extracts the rubber sheet from the cooling unit and transfers it to the discharge conveyor. Application of a bilaterally tilting gripper allows the operation of two handover positions: hugger belt operation and stacker operation.

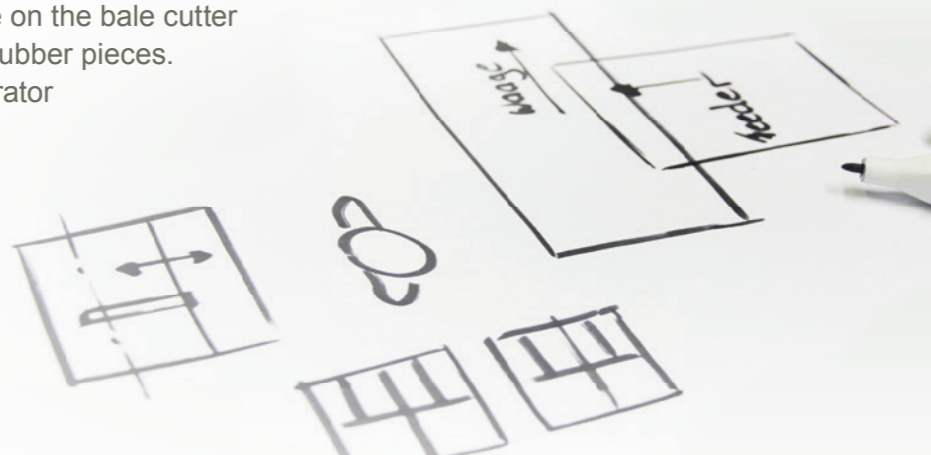
During the stacking process, the pendulum places the rubber sheet onto a prepared pallet according to a pre-defined batch length or batch weight. The rubber sheet can also be stacked in a mesh pallet or plastic box. The sensor-controlled scissor lift combined with pneumatic-controlled hold-down flaps ensures optimum stacking.



From rubber bales ... ➔ Bale cutter

The relationship between people and their working environment is a major factor of our mixer feeding strategy. Reduced handling is of paramount importance when cutting rubber.

The bale cutter ensures this thanks to its ease of use from just one side. The rubber bales are cut using a circular knife at the push of a button. The operator is able to effortlessly remove the individual pieces before placing them on the polymer scale ready for weighing. A depositing plate on the bale cutter is used to store the remaining rubber pieces. A light curtain protects the operator against injury.



... to pellets ➔ Strip pelletizer

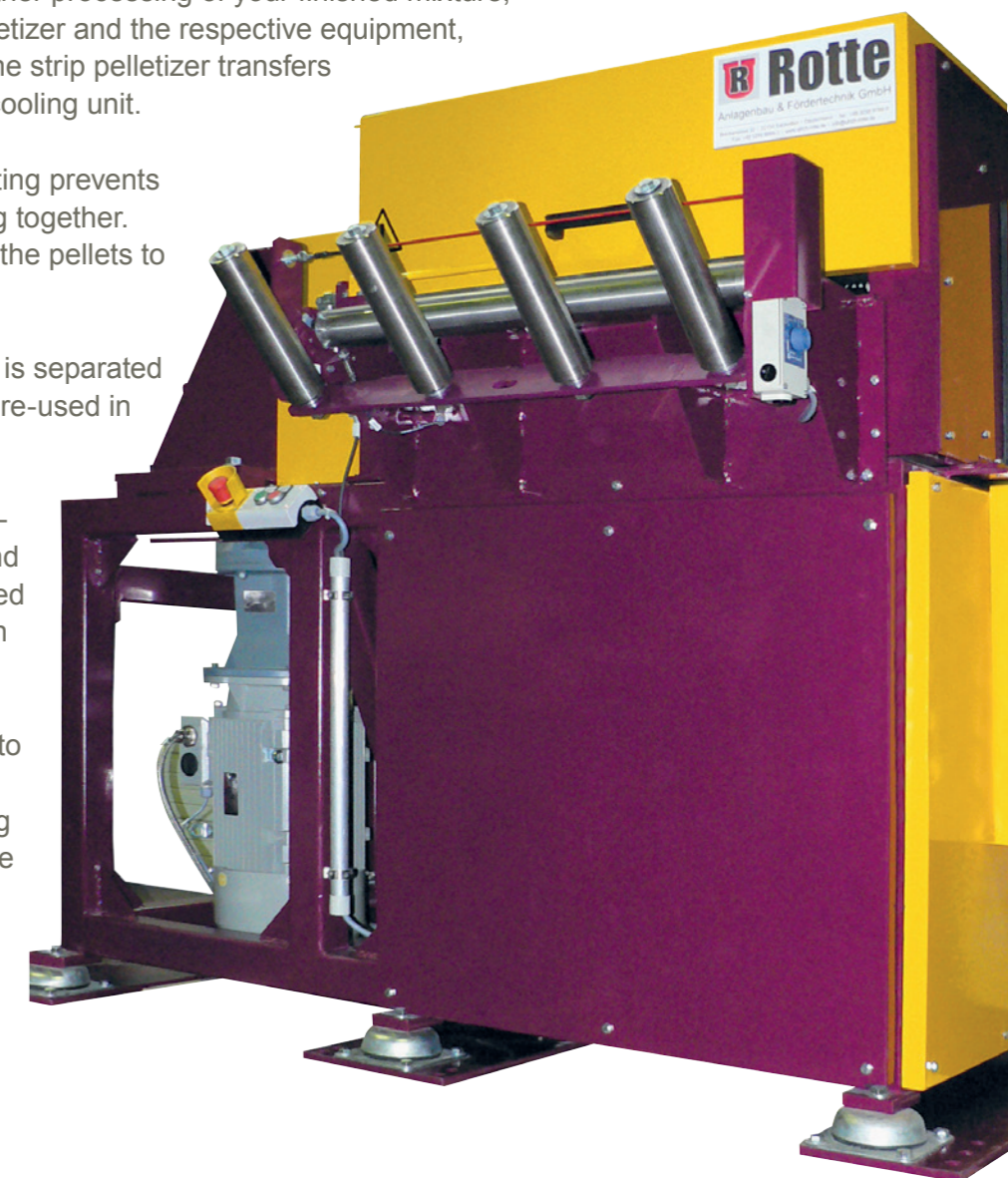
If you use pellets for the further processing of your finished mixture, we can integrate a strip pelletizer and the respective equipment, such as big-bag stations. The strip pelletizer transfers the strips straight from the cooling unit.

If necessary, automatic dusting prevents the individual pellets sticking together. A suction device transports the pellets to a bag or big-bag station.

Excessive separating agent is separated and collected in order to be re-used in the pelletizing process.

When using an offline solution, the previously cooled and stacked strips are transported to the pelletizer from a mesh pallet or a pallet.

We customize the machine to your needs: maximum strip width, pellet size, processing of individual strips or multiple strips.





We ship our plants worldwide.
Our team is at home in the world.



... at home in the world ➔ Rotte international

All our planned and constructed plants are tested and accepted together with our customers before being prepared for shipping.

This involves carefully disassembling all the components and packing the individual elements in bespoke wooden crates. If necessary, these crates can also be designed for sea transport. Built to standards, they fit on the loading ramps of trucks and container ships.

We also offer a worldwide installation and commissioning service. Our engineers and technicians ensure that your plant functions efficiently and effectively anywhere in the world.

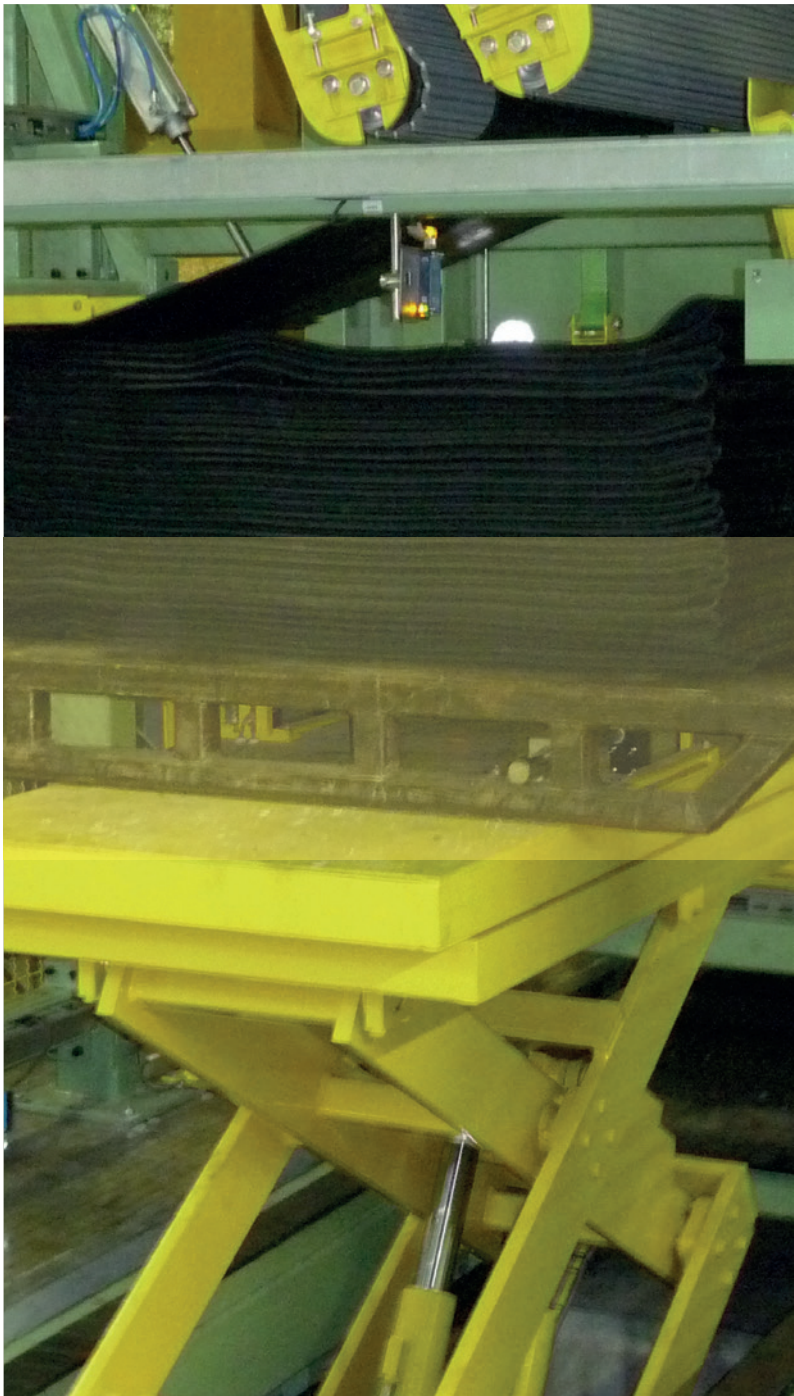
Our range of services ... ➔ Control unit construction and programming

Individual plant concepts, clever transport logistics and sophisticated testing technology demand structured control procedures with transparent program structures.

Our control planners and programmers plan and create the necessary control units according to the requirements profile and country-specific guidelines. Based on the required functional sequences, we program and visualize your plant concept, including all the necessary interfaces to adjacent or integrated sections, such as your computer systems.

Remote access to our control units ensures quick and effective international support even after installation and commissioning.





Anlagenbau & Fördertechnik GmbH

Ulrich Rotte
Anlagenbau u. Fördertechnik GmbH
Brockenslee 32
33154 Salzkotten ■ Germany

Fon: +49 5258 9789-0
Fax: +49 5258 9999-3
info@ulrich-rotte.de
www.ulrich-rotte.de